

# 3000 Series Fan Forced Ceiling Heater



Manufactured in U.S.A.



## Standard Models

| WHITE  |           | SELECTABLE INSTALLATION WATTAGE | MAX BTU'S | VOLTS     | MAX AMPS | LIST |
|--------|-----------|---------------------------------|-----------|-----------|----------|------|
| UPC    | MODEL     |                                 |           |           |          |      |
| 686334 |           |                                 |           |           |          |      |
| 948821 | E3035DWBW | 750 or 1500                     | 5120      | 120       | 13       | 235  |
| 948838 | E3038DWBW | 900 or 1800                     | 6143      | 120       | 15       |      |
| 948883 | H3032DWBW | 750 or 1000 - 1500 or 2000      | 6826      | 208 / 240 | 8        |      |
| 948906 | G3032DWBW | 2000                            | 6826      | 277       | 7        |      |

## Selectable Wattages, Back Cans, And Power Disconnects

- Wattage selectable at time of installation - models shipped wired to highest Wattage
- Fan purge circuit (requires 4 wire supply when remote single pole wall thermostat is used with the unit)
- Models may not be used with remote double pole thermostat
- Drywall depth embossments on back can
- Powder coated 18 Gauge steel front
- Manual reset thermal limit
- Steel block fin element
- Propeller style fan blade - 1060 RPM / 100 CFM
- Weight 6 lbs.
- Optional field installed control voltage relays available
- Rough in dimensions - 9 1/4" Wide - 12 1/8" High - 3 5/8" Deep
- Grill dimensions: 9 25/32" Wide - 13" High

## Field Installed Accessories

| UPC    | MODEL     | DESCRIPTION            | LIST |
|--------|-----------|------------------------|------|
| 686334 |           |                        |      |
| 996846 | 30R       | 24 VOLT RELAY          | 32   |
| 996853 | 30R2      | 120 VOLT RELAY         |      |
| 951500 | 30R8      | 208/240 VOLT RELAY     | 34   |
| 951494 | 30R7      | 277 VOLT RELAY         |      |
| 996976 | 303EX8RW  | 1" EXTENDER            | 34   |
| 996969 | 303EX16RW | 2" EXTENDER            | 34   |
| 996952 | 303EX32RW | 4" SURFACE MOUNT FRAME | 40   |
| 460033 | TB3000    | T-BAR FRAME            | 53   |

# 3380 Series Commercial Fan Forced Ceiling Heater

## Product Specifications

Furnish and install Electric Forced Air Heaters, Series 3380 where specified. The heaters shall be constructed of a heavy gauge steel housing. The rough-in dimensions are 19-3/16" wide x 4" deep. The finish shall be baked-on powder coat in Ceiling White color. The units shall be available in ratings from 1500 through 4800 Watts with an optional factory installed single pole thermostat.

The heaters shall have a low speed 600-RPM motor, which drives a vane axial blower to deliver a quite 175 CFM's of down flow air. The heating element shall be of the block finned type with large, parallel steel fins for quick heat transfer. Unit shall have as standard, a manual reset capillary type limit control, for added safety. Unit weight 22 pounds.



Manufactured in U.S.A.

## Features & Standard Models

### Recess, Surface, Or "T" Bar Mounting



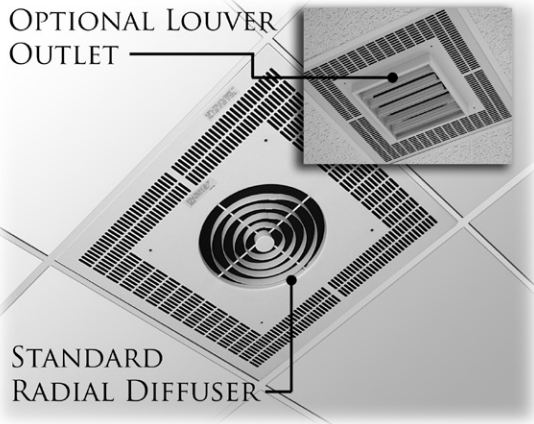
- Fan purge circuit (requires 4 wire supply when remote wall thermostat is used with the unit)
- Disconnect switch
- White powder coated 18 Gauge steel grill
- Manual reset thermal limit
- Steel block fin element
- Vane axial fan blade:  
1.5KW - 4.0KW units: 700 RPM motor; 175 CFM  
4.8KW units: 900 RPM motor; 200 CFM
- Rough in dimensions:  
14 3/16" wide x 19 5/16" high x 4" deep
- Grill dimensions:  
15 3/8" wide x 20 9/64" high
- Optional factory installed thermostat

| UPC#   | MODEL      | KW        | BTU'S       | VOLTS   | PH | AMPS      | TEMP RISE | LIST |
|--------|------------|-----------|-------------|---------|----|-----------|-----------|------|
| 686334 |            |           |             |         |    |           |           |      |
| 366489 | E3383D-RP  | 1.5       | 5120        | 120     | 1  | 12.5      | 27 °F     | 545  |
| 366298 | F3386D-RP  | 4.0       | 13600       | 208     |    | 19.2      | 72 °F     | 573  |
| 366304 | F3387D-RP  | 4.8       | 16382       | 208     |    | 23.1      | 76 °F     | 645  |
| 366342 | HF3384D-RP | 2.0 / 1.5 | 6826/5120   | 240/208 |    | 8.3/7.2   | 36 °F     | 501  |
| 366359 | HF3385D-RP | 3.0 / 2.3 | 10200/7679  | 240/208 |    | 12.5/10.8 | 54 °F     | 571  |
| 366366 | HF3386D-RP | 4.0 / 3.0 | 13600/10200 | 240/208 |    | 16.8/14.4 | 72 °F     |      |
| 366373 | H3387D-RP  | 4.8       | 16382       | 240     |    | 20        | 76 °F     | 644  |
| 366502 | G3383D-RP  | 1.5       | 5120        | 277     |    | 5.4       | 27 °F     | 545  |
| 366410 | G3384D-RP  | 2.0       | 6826        | 277     |    | 7.2       | 36 °F     | 571  |
| 366427 | G3385D-RP  | 3.0       | 10200       | 277     |    | 10.8      | 54 °F     | 645  |
| 366434 | G3386D-RP  | 4.0       | 13600       | 277     |    | 14.4      | 72 °F     |      |
| 366441 | G3387D-RP  | 4.8       | 16382       | 277     |    | 17.3      | 76 °F     | 715  |

## Accessories

| UPC                               | MODEL    | DESCRIPTION   | WT.    | LIST |
|-----------------------------------|----------|---|--------|------|
| 686334                            |          |   |        |      |
| 377850                            | BOX3310  | Additional Back Can   | 10 lbs | 89   |
| 366465                            | 3380EX33 | Surface Mounting Adapter  | 1 lb   | 79   |
| 366458                            | TB3380   | 2X2 T-Bar Mounting Kit  | 7 lbs  | 53   |
| Thermostat- Add suffix T to model |          | Factory installed single pole, positive off. Range-60° F-105° F |        | 103  |

# 3480 Series Commercial Fan Forced Recessed Mounted Ceiling Heater



Manufactured in U.S.A.

### Notes

Optional controls must be factory installed. Field installation is not acceptable and violates Listing and factory warranty.

Wall mounted control panels may control multiple units but cannot be used if in-built controls are selected.

480V units include 24V transformer and relay as standard (A1) - only TS option control section can be added. Depth dimension of all 480V models is 10-7/8"

Degree F air rise is measured at 710 F.P.M. and 425 CFM. Throw designed for 8 to 12 foot ceilings. db RE 10<sup>-12</sup> Watt=63.9

Unit Weight: 50 lbs.

Recommended Remote Thermostats:  
 Line Voltage: Single Phase 208-240V ET5DS  
 Single Phase 277V ET5SS  
 Three Phase TW1512

Low Voltage: UT1001

### Product Specifications

Contractor shall supply and install heavy duty ceiling mounted forced air electric heater(s) of the wattage, voltage and phase as indicated on the plans. The heater shall be so designed to provide an even distribution of heated air to the space to be heated by drawing return air in the periphery of the heater, across and through the element and be discharged from the center section of the heater by means of an electric motor and axial flow fan blade.

Heaters shall be recessed type and mounted flush with the finished ceiling. The return grille assembly shall be constructed of a one piece heavy gauge steel with 1/4" slots for return air and concentric rings for uniform air discharge. Grille assembly shall be attached to chassis by tamper-resistant (allen head) machine screws. All parts of enclosure shall be heavy Gauge steel, zinc coated both sides and finished in neutral off white powder coat paint.

Enclosure shall be constructed of 1/6" x 3/8" rounded edge horizontal steel louvers which shall be spaced for maximum opening of 5/16". Louvers shall be welded at every intersection to evenly spaced 1/8" diameter vertical members. Discharge grille to have concentric rings for uniform air discharge. Grille assembly shall be attached to chassis by tamper-resistant (allen head) machine screws. All part of enclosure shall be heavy gauge steel, Zinc coated both sides and finished in neutral off white colored powder coat finish.

Motor shall be permanent lubricated, unit bearing, totally enclosed, impedance protection. Motors shall operate at no more than 1300 RPM and shall be same voltage as the heater.

Heaters shall have a rating of 425 CFM at 710 F.P.M. with a maximum temperature rise of 44°F and 63.9 DB RE 10<sup>-12</sup> Watt.

Element assemblies shall consist of two or three corrosion resistant steel sheathed type elements mechanically bonded to common corrosion resistant steel fins. Each sheathed element shall consist of helically coiled Nickel Chromium alloy resistant wire completely embedded in and surrounded by magnesium oxide, enclosed and wedged into corrosion resistant steel sheaths. Elements shall have 2" cold conductor pins extending into sheath and shall have a density of no more than 60 Watts per inch.

Heaters shall be equipped with a "manual reset" thermal overload which disconnects elements and motor in the event normal operating temperatures are exceeded. For safety, if opened due to abnormal temperature, thermal overload shall remain open until manually reset. Automatic reset thermal overloads which allow the element to continue to cycle under abnormal conditions will not be accepted. Heaters shall be ETL listed.

### Features

- White powder coated 20 Gauge grill.
- 208V, 240V, & 277V units have manual reset thermal limit.
- 480V units have manual reset thermal limit, 24V control transformer, and 24V relay (A1 suffix).
- Enclosed steel fin sheath element.
- Rough in dimensions: 23-1/16" sq. x 9-1/8" deep.



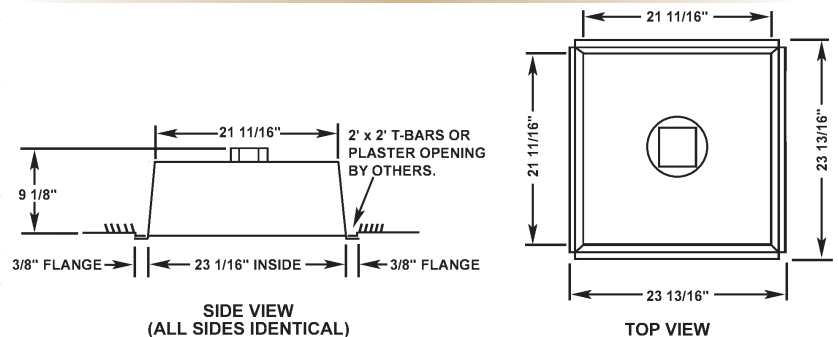
### Standard Models

| UPC#   | MODEL   | KW                           | BTU'S | VOLTS | PH | AMPS | TEMP RISE | LIST |     |
|--------|---------|------------------------------|-------|-------|----|------|-----------|------|-----|
| 686344 |         |                              |       |       |    |      |           |      |     |
| 367653 | F3482   | 2                            | 6826  | 208   | 1  | 9.6  | 15 °F     | 1235 |     |
| 367677 | H3482   |                              |       | 240   |    | 8.3  |           |      |     |
| 367660 | G3482   |                              |       | 277   |    | 7.2  |           |      |     |
| 318471 | P3482A1 | 2                            | 6826  | 480   | 3  | 4.2  | 15 °F     | 1351 |     |
| ----   | J3482   |                              |       | 208   |    | 5.6  |           |      |     |
| ----   | K3482   |                              |       | 240   |    | 4.8  |           |      |     |
| ----   | Y3482A1 |                              |       | 480   |    | 2.4  |           | 1441 |     |
| 367684 | F3483   | 3                            | 10200 | 208   | 1  | 14.4 | 22 °F     | 1250 |     |
| 367707 | H3483   |                              |       | 240   |    | 12.5 |           |      |     |
| 367691 | G3483   |                              |       | 277   |    | 10.8 |           |      |     |
| 318488 | P3483A1 | 3                            | 10200 | 480   | 3  | 6.3  | 22 °F     | 1366 |     |
| ----   | J3483   |                              |       | 208   |    | 8.3  |           |      |     |
| ----   | K3483   |                              |       | 240   |    | 7.2  |           |      |     |
| ----   | Y3483A1 |                              |       | 480   |    | 3.6  |           | 1456 |     |
| 367714 | F3484   | 4                            | 13600 | 208   | 1  | 19.2 | 30 °F     | 1264 |     |
| 367738 | H3484   |                              |       | 240   |    | 16.8 |           |      |     |
| 367721 | G3484   |                              |       | 277   |    | 14.4 |           |      |     |
| 318501 | P3484A1 | 4                            | 13600 | 480   | 3  | 8.3  | 30 °F     | 1379 |     |
| 367745 | J3484   |                              |       | 208   |    | 11.1 |           |      |     |
| 367752 | K3484   |                              |       | 240   |    | 9.7  |           |      |     |
| 318587 | Y3484A1 |                              |       | 480   |    | 4.8  |           | 1482 |     |
| 367769 | F3485   | 5                            | 17000 | 208   | 1  | 24.1 | 37 °F     | 1418 |     |
| 367783 | H3485   |                              |       | 240   |    | 20.8 |           |      |     |
| 367776 | G3485   |                              |       | 277   |    | 18.1 |           |      |     |
| 318549 | P3485A1 | 5                            | 17000 | 480   | 3  | 10.4 | 37 °F     | 1541 |     |
| 367790 | J3485   |                              |       | 208   |    | 13.9 |           |      |     |
| 367806 | K3485   |                              |       | 240   |    | 12.1 |           |      |     |
| 318402 | Y3485A1 |                              |       | 480   |    | 6.1  |           | 1625 |     |
| 366106 | PT3480  | Recess Frame - Weight 5 lbs. |       |       |    |      |           |      | 131 |

### Factory Installed Control Sections

| SUFFIX | DESCRIPTION   | LIST |
|--------|---|------|
| A1     | Transformer with 24V Secondary and 24V Relay                            | 117  |
| S      | Disconnect Switch   | 146  |
| TA1S   | Thermostat / Transformer / Disconnect Switch                            | 343  |
| TA1    | Single Pole Thermostat and Transformer with 24V Secondary and 24V Relay | 213  |
| A1S    | Transformer with 24V Secondary and 24V Relay and Disconnect Switch      | 265  |
| T2     | Double Pole Thermostat  | 116  |
| T2S    | Double Pole Thermostat and Disconnect Switch                            | 260  |
| R      | Relay Control Voltage Same as Heater (control voltage field supplied)   | 72   |
| R1     | Relay 24V Control Voltage (control voltage field supplied)              | 117  |
| R2     | Relay 120V Control Voltage (control voltage field supplied)             | 108  |

### Product Dimensions



# 3470 Series Commercial Fan Forced Surface Mounted Ceiling Heater

## Product Specifications

Contractor shall supply and install heavy duty ceiling mounted forced air electric heater(s) of the wattage, voltage and phase as indicated on the plans. The heater shall so be designed to provide an even distribution of heated air to the space to be heated by drawing return air in the periphery of the heater, across and through the element and be discharged from the center section of the heater by mean of an electric motor and axial flow fan blade.

**Motor:** Motor shall be permanent lubricated, unit bearing, totally enclosed shaded pole type with impedance protection. Motors shall operate at no more than 1300 RPM and shall be same voltage as the heater.

**Performance:** Heaters shall have a rating of 425 CFM at 710 F.P.M. with a maximum temperature rise of 44°F and 63.9 DB RE 10<sup>12</sup> Watt.

**Element:** Element assemblies shall consist of two or three corrosion resistant steel sheathed type elements mechanically bonded to common corrosion resistant steel fins. Each sheathed element shall consist of helically coiled Nickel Chromium alloy resistant wire completely embedded in and surrounded by Magnesium Oxide, enclosed and wedged into corrosion resistant steel sheaths. Elements shall have 2" cold conductor pins extending into sheath and shall have a density of no more than 60 watts per inch.

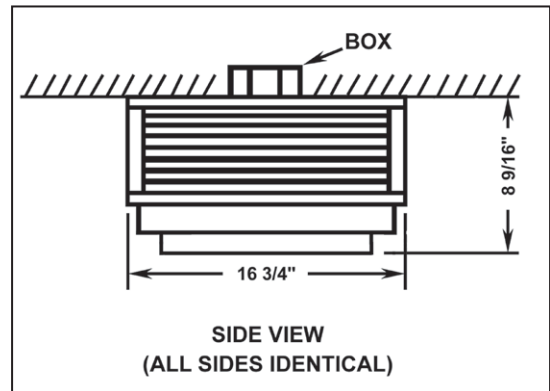
**Thermal Overload:** Heaters shall be equipped with a "manual reset" thermal overload which disconnects elements and motor in the event normal operating temperatures are exceeded. For safety, if opened due to abnormal temperature, thermal overload shall remain open until manually reset. Automatic reset thermal overloads which allow the element to continue to cycle under abnormal conditions will not be accepted.

**Approval:** Heaters shall be ETL listed.

**Commercial and Institutional Applications:** Use in - vestibules, entrance ways, lobbies, restrooms and small office and guard building applications.



## Product Dimensions



## Standard Models

| UPC#   | MODEL   | KW  | BTU'S | VOLTS | PH | AMPS  | TEMP RISE | LIST |
|--------|---------|-----|-------|-------|----|-------|-----------|------|
| 686334 |         |     |       |       |    |       |           |      |
| 367516 | F3472   | 2   | 6826  | 208   | 1  | 9.6   | 15 °F     | 1235 |
| 367530 | H3472   |     |       | 240   |    | 8.3   |           |      |
| 367523 | G3472   |     |       | 277   |    | 7.2   |           |      |
| 324335 | P3472A1 |     |       | 480   |    | 4.2   |           |      |
| ----   | J3472   | 2   | 6826  | 208   | 3  | 5.6   | 22 °F     | 1325 |
| ----   | K3472   |     |       | 240   |    | 4.8   |           |      |
| ----   | Y3472A1 |     |       | 480   |    | 2.4   |           |      |
| 367547 | F3473   | 3   | 10200 | 208   | 1  | 14.4  | 22 °F     | 1264 |
| 367561 | H3473   |     |       | 240   |    | 12.5  |           |      |
| 367554 | G3473   |     |       | 277   |    | 10.8  |           |      |
| 324342 | P3473A1 |     |       | 480   |    | 6.3   |           |      |
| ----   | J3473   | 3   | 10200 | 208   | 3  | 8.3   | 22 °F     | 1379 |
| ----   | K3473   |     |       | 240   |    | 7.2   |           |      |
| ----   | Y3473A1 |     |       | 480   |    | 3.6   |           |      |
| 367578 | F3474   |     |       | 4     |    | 13600 |           |      |
| 367592 | H3474   | 240 | 16.8  |       |    |       |           |      |
| 367585 | G3474   | 277 | 14.4  |       |    |       |           |      |
| 324359 | P3474A1 | 480 | 8.3   |       |    |       |           |      |
| 367608 | J3474   | 4   | 13600 | 208   | 3  | 11.1  | 30 °F     | 1365 |
| 367837 | K3474   |     |       | 240   |    | 9.7   |           |      |
| 324366 | Y3474A1 |     |       | 480   |    | 4.8   |           |      |
| 367615 | F3475   |     |       | 5     |    | 17000 |           |      |
| 367639 | H3475   | 240 | 20.8  |       |    |       |           |      |
| 367622 | G3475   | 277 | 18.1  |       |    |       |           |      |
| 324373 | P3475A1 | 480 | 10.4  |       |    |       |           |      |
| 367646 | J3475   | 5   | 17000 | 208   | 3  | 13.9  | 37 °F     | 1505 |
| 367844 | K3475   |     |       | 240   |    | 12.1  |           |      |
| 324380 | Y3475A1 |     |       | 480   |    | 6.1   |           |      |

## Factory Installed Control Sections

| SUFFIX | UNITS        | DESCRIPTION  | LIST |
|--------|--------------|--|------|
| TS     | 1-Phase      | Single Pole Thermostat - range 50°-90°F and Disconnect Switch  | 245  |
| TA1S   | 3-Phase      | Single Pole Thermostat - range 50°-90°F & Transformer with 24V Secondary and 24V Relay & Disconnect Switch | 256  |
| A1S    | 1 or 3 Phase | Transformer with 24V Secondary and 24V Relay and Disconnect Switch   | 262  |

## Wall Mounted Control Panels

| UPC    | MODEL     | VOLTS | CONTACTORS  | BOX SIZE           |
|--------|-----------|-------|-------------|--------------------|
| 686334 |           |       |             |                    |
| 605700 | AF3401-24 | 208   | 1 @ 35 AMPS | 12" x 12" x 4 1/2" |
| 605793 | AH3401-24 | 240   |             |                    |
| 605854 | AG3401-24 | 277   | 2 @ 35 AMPS | 15" x 15" x 4 1/2" |
| 605748 | AF3402-24 | 208   |             |                    |
| 605786 | AH3402-24 | 240   |             |                    |
| 605847 | AG3402-24 | 277   | 3 @ 35 AMPS | 18" x 18" x 4 1/2" |
| 605731 | AF3403-24 | 208   |             |                    |
| 605779 | AH3403-24 | 240   |             |                    |
| 605830 | AG3403-24 | 277   |             |                    |

## Notes

Optional controls must be factory installed. Field installation is not acceptable and violates Listing and factory warranty.

Factory installed control sections add 2-5/16" to the height of the unit.

Wall mounted control panels may control multiple units but cannot be used if In-Built controls are selected.

480V units include 24V transformer and relay as standard (A1) - only TS option control section can be added. Depth dimension of all 480V models is 10-7/8"

Degree F air rise is measured at 710 F.P.M. and 425 CFM. Throw designed for 8 to 12 foot ceilings. db RE 10<sup>-12</sup> Watt=63.9

Unit weight: 32 lbs.

Recommended Remote Thermostats:  
 Line Voltage: Single Phase 208-240V ET5DS  
 Single Phase 277V ET5SS  
 Three Phase TW1512

Low Voltage: UT1001



# CP & RCP Series Radiant Ceiling Panel Heaters

## Product Description

For Surface Or Recessed Installation, Radiant Ceiling Panels radiate energy like the solar radiation which warms us, heats people and things, not the air. With no moving parts, these heating panels create gentle warmth and toasty comfort.



Radiant Ceiling Panels provide a low surface temperature and broad heat distribution. Clean, gentle comfortable heat that is ideal for offsetting perimeter heat loss or neutralizing downdrafts over glass. These versatile and flexible panels may be used virtually anywhere in homes, schools, hospitals, motels and a broad variety of other commercial or industrial installations.

*Manufactured in U.S.A.*

## Product Specifications

### Construction:

Radiant Ceiling Panels shall be made of highest quality steel casing. Front panel shall be painted with textured powder coated finish. Electric Resistance graphite element is fixed between dielectric material and insulation. Two inches of insulation is compressed to one inch by back panel to minimize upward heat loss and radiant efficiency. Radiant panels shall have 36" pre-wired flexible cable for easy installation and wiring connections.

### Installation:

CP Series shall be designated as 2x2 or 2x4 size. All panels are 1" thick. The size shall be nominal dimension to be manufactured to fit drop ceiling systems. Standard units will fit regular "T" Bar frame. For regular or trim line or other frame sizes, special construction is required. RCP Series shall be used in recess mounting applications. RCP Series shall be 2" less in width to recess between nominal 24" center ceiling joists. RCP Series shall be complete with recess frame for finished construction.

### Accessories:

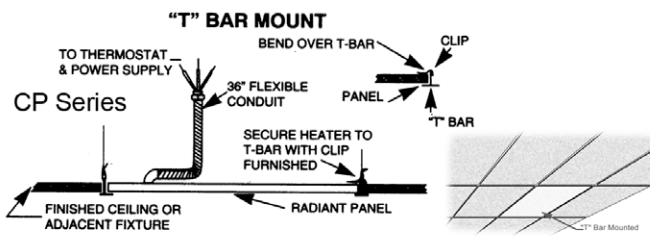
Surface mounting frames shall be optional for surface mounting the CP Series, and are Aluminum mill finish. Frames can be painted white to match panel.

### Options:

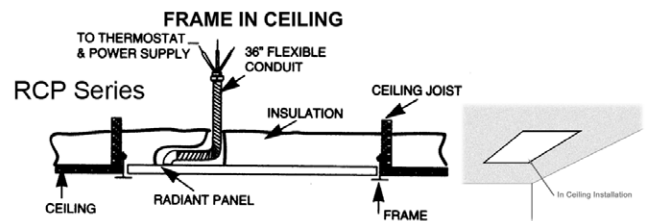
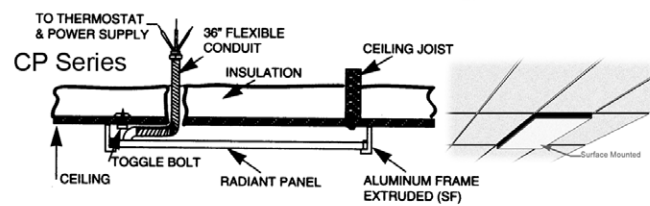
Silk-screening the exposed surface to match ceiling tiles is available, as well as silicone sealed metal parts for high humidity applications.

*CP Series - "T" Bar & Surface Mounted*

| UPC 686334                                | MODEL  | WATTS | BTU's | AMPS    | VOLTS   | WT     | LIST |
|---|--|-------|-------|---------|---------|--------|------|
| <b>Dimensions: 2' x 4' (Nominal) x 1"</b> |  |       |       |         |         |        |      |
| 458719                                    | CP805  | 500   | 1707  | 2       | 208     | 20 lb. | 381  |
| 458726                                    | CP125  |       |       | 4.2/2.1 | 120/240 |        |      |
| 458733                                    | CP705  |       |       | 2       | 277     |        |      |
| 458740                                    | CP807  | 750   | 2560  | 4       | 208     | 20 lb. | 393  |
| 458757                                    | CP127  |       |       | 6.3/3.1 | 120/240 |        |      |
| 458764                                    | CP707  |       |       | 3       | 277     |        |      |
| <b>Dimensions: 2' x 2' (Nominal) x 1"</b> |  |       |       |         |         |        |      |
| 458771                                    | CP802  | 250   | 853   | 1       | 208     | 13 lb. | 250  |
| 458788                                    | CP122  |       |       | 2.1/1.0 | 120/240 |        |      |
| 458795                                    | CP702  |       |       | 0       | 277     |        |      |
| 458801                                    | CP803  | 375   | 1280  | 2       | 208     | 13 lb. | 302  |
| 458818                                    | CP123  |       |       | 3.1/1.6 | 120/240 |        |      |
| 458825                                    | CP703  |       |       | 1       | 277     |        |      |
| 459105                                    | SF400 Surface Frame for 2' x 4' Panels (CP only) |       |       |         |         | 10 lb. | 168  |
| 459099                                    | SF200 Surface Frame for 2' x 2' Panels           |       |       |         |         | 6 lb.  | 133  |



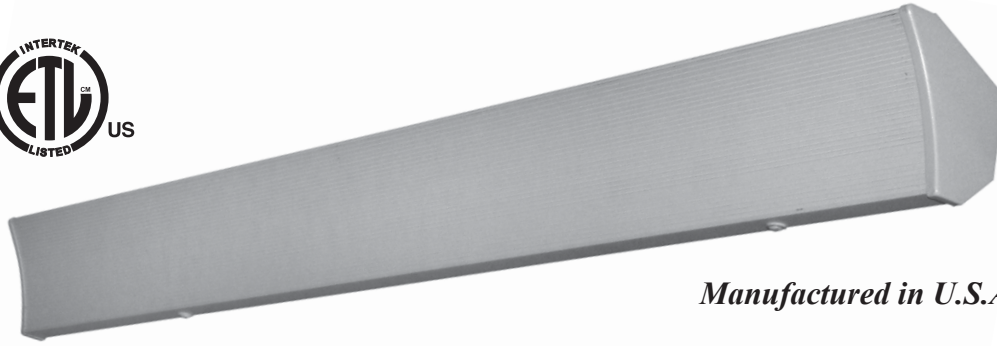
**FOR SURFACE MOUNTED UNITS USE STANDARD "T" BAR CEILING PANEL AND SURFACE MOUNTING FRAME.**



*RCP Series - Frame in Ceiling Mounted*

| UPC 686334   | MODEL  | WATTS | BTU's | AMPS    | VOLTS   | WT     | LIST |
|--|--------|-------|-------|---------|---------|--------|------|
| <b>Dimensions: 2' x 4' (Including Recessing Frame)</b> |        |       |       |         |         |        |      |
| 458832   | RCP805 | 500   | 1707  | 2       | 208     | 30 lb. | 541  |
| 458849   | RCP125 |       |       | 4.2/2.1 | 120/240 |        |      |
| 458856   | RCP705 |       |       | 2       | 277     |        |      |
| 458863   | RCP807 | 750   | 2560  | 4       | 208     | 30 lb. | 598  |
| 458870   | RCP127 |       |       | 6.3/3.1 | 120/240 |        |      |
| 458887   | RCP707 |       |       | 3       | 277     |        |      |
| <b>Dimensions: 2' x 2' (Including Recessing Frame)</b> |        |       |       |         |         |        |      |
| 458894   | RCP802 | 250   | 853   | 1       | 208     | 19 lb. | 363  |
| 458900   | RCP122 |       |       | 2.1/1.0 | 120/240 |        |      |
| 458917   | RCP702 |       |       | 0       | 277     |        |      |
| 458924   | RCP803 | 375   | 1280  | 2       | 208     | 19 lb. | 456  |
| 458931   | RCP123 |       |       | 3.1/1.6 | 120/240 |        |      |
| 458948   | RCP703 |       |       | 1       | 277     |        |      |

# CVX Series Radiant Cove Ceiling Heater



*Manufactured in U.S.A.*

## Product Description

Cove Heaters have a subtly contoured concave surface with a saw-tooth profile. The concave parabolic face plate performs a two-fold function: (1) it focuses the infrared rays and (2) directs the heat downward along cold perimeters and toward the center of the room. The sawtooth surface design increases the radiating surface area by 45%, thereby increasing the comfort level of the room faster and insuring more rapid recovery from heat losses.

## Product Specifications

Furnish and install Electric Cove Heaters where specified. The heaters shall be constructed of .962" thick Aluminum. The heater surface shall be concave in contour and saw-tooth in profile. The finish shall be of powder coat white finish. The heaters shall be available in ratings from 450 through 1250 Watts, at 120, 240, 208 and 277 Volts. The heating element shall be of nichrome wire, embedded in Magnesium Oxide powder, enclosed and sealed in Aluminum metal tubing. The heater shall be listed by ETL and the elements shall be supplied with a one year limited warranty.

## Standard Models

| UPC# 686334 | MODEL    | WATTS | BTU's | AMPS | VOLTS | LENGTH | WT.    | LIST |
|-------------|----------|-------|-------|------|-------|--------|--------|------|
| 457583      | CV4512X  | 450   | 1536  | 4    | 120   | 42"    | 7 lb.  | 191  |
| 457590      | CV45X    | 450   |       | 2    | 240   |        |        |      |
| 457606      | CV45YX   | 450   |       | 2.0  | 208   |        |        |      |
| 457613      | CV4527X  | 450   |       | 2    | 277   |        |        |      |
| 457620      | CV6012X  | 600   | 2048  | 5.0  | 120   | 60"    | 10 lb. | 238  |
| 457637      | CV60X    | 600   |       | 3    | 240   |        |        |      |
| 457644      | CV60YX   | 600   |       | 3    | 208   |        |        |      |
| 457651      | CV6027X  | 600   |       | 2    | 277   |        |        |      |
| 457668      | CV7512X  | 750   | 2560  | 6    | 120   | 72"    | 13 lb. | 263  |
| 457675      | CV75X    | 750   |       | 3    | 240   |        |        |      |
| 457682      | CV75YX   | 750   |       | 3.6  | 208   |        |        |      |
| 457699      | CV7527X  | 750   |       | 3    | 277   |        |        |      |
| 457705      | CV9012X  | 900   | 3072  | 8    | 120   | 84"    | 14 lb. | 298  |
| 457712      | CV90X    | 900   |       | 4    | 240   |        |        |      |
| 457729      | CV90YX   | 900   |       | 4    | 208   |        |        |      |
| 457736      | CV9027X  | 900   |       | 3    | 277   |        |        |      |
| 457743      | CV10012X | 1000  | 3413  | 8    | 120   | 96"    | 17 lb. | 310  |
| 457750      | CV100X   | 1000  |       | 4    | 240   |        |        |      |
| 457767      | CV100YX  | 1000  |       | 5    | 208   |        |        |      |
| 457774      | CV10027X | 1000  |       | 4    | 277   |        |        |      |
| 457781      | CV11012X | 1100  | 3754  | 9    | 120   | 108"   | 19 lb. | 345  |
| 457798      | CV110X   | 1100  |       | 5    | 240   |        |        |      |
| 457804      | CV110YX  | 1100  |       | 5    | 208   |        |        |      |
| 457811      | CV11027X | 1100  |       | 4.0  | 277   |        |        |      |
| 457828      | CV12512X | 1250  | 4266  | 10   | 120   | 120"   | 21 lb. | 381  |
| 457835      | CV125X   | 1250  |       | 5    | 240   |        |        |      |
| 457842      | CV125YX  | 1250  |       | 6.0  | 208   |        |        |      |
| 457859      | CV12527X | 1250  |       | 5    | 277   |        |        |      |

## Accessories & Dimensions

| UPC# 686334 | MODEL  | DESCRIPTION            | WT.     | LIST |
|-------------|--------|------------------------|---------|------|
| 457927      | CVCBX  | Ceiling Bracket*       | 1/2 lb. | 6    |
| 457866      | CVB42X | 42" Blank Section      | 6 lb.   | 44   |
| 457873      | CVB60X | 60" Blank Section      | 8 lb.   | 64   |
| 457880      | CVB84X | 84" Blank Section      | 12 lb.  | 87   |
| 457912      | CVSP   | Aerosol Touch-up Paint | 1 lb.   | 41   |

\* Order 2 for units up to 72"  
Order 3 for units over 72"

