

# COMMERCIAL SURFACE MOUNTED CEILING HEATERS

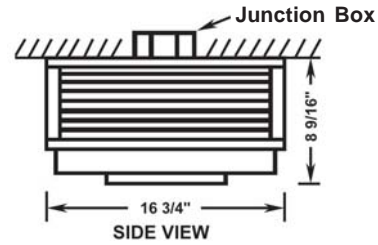
MOUNTS TO ELECTRICAL JUNCTION BOX INSTALLED IN THE CEILING  
DIMENSIONS



## 3470 SERIES

- Radial Diffuser
- White Powder Coated 20 ga. grill
- 208v / 240v / 277v units have manual reset thermal limit
- 480v units have automatic reset thermal limits, 24 volt control transformer, and 24v relay (A1 suffix)
- Enclosed steel fin sheath element
- Propeller style fan blade: 1300 RPM motor; 425 CFM
- Weight 32 lbs., 480v models 38 lbs.
- Rough in dimensions: none - unit surface mounts to electrical junction box installed in ceiling (not provided)
- Optional factory installed adjustable louver diffuser.

See pages 68-69 for low voltage and line voltage wall thermostats



UPC 686334	MODEL	KW	BTU'S	VOLTS	PH	AMPS	TEMP RISE	LIST
367516	F3472	2	6826	208	1	9.6	15 °F	1235
367530	H3472			240		8.3		
367523	G3472			277		7.2		
324335	P3472A1			480		4.2		
367547	F3473	3	10200	208	1	14.4	22 °F	1250
367561	H3473			240		12.5		
367554	G3473			277		10.8		
324342	P3473A1			480		6.3		
367578	F3474	4	13600	208	1	19.2	30 °F	1264
367592	H3474			240		16.8		
367585	G3474			277		14.4		
324359	P3474A1			480		8.3		
367608	J3474			208	3	11.1		1365
367837	K3474			240		9.7		
324366	Y3474A1			480		4.8		
367615	F3475			208		1		
367639	H3475	240	20.8					
367622	G3475	277	18.1					
324373	P3475A1	480	10.4					
367646	J3475	208	3	13.9	1505			
367844	K3475	240		12.1				
324380	Y3475A1	480		6.1				

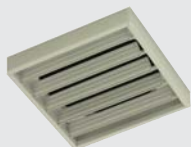
### FACTORY INSTALLED CONTROL SECTION

(Adds 2 5/16" to height of unit)

SUFFIX	UNITS	DESCRIPTION	LIST
TS	1-Phase	Single Pole Thermostat - range 50°-90°F and Disconnect Switch	245
TA1S	3-Phase	Single Pole Thermostat - range 50°-90°F & Transformer with 24V Secondary and 24V Relay & Disconnect Switch	256
A1S	1 or 3 Phase	Transformer with 24V Secondary and 24V Relay and Disconnect Switch	262

NOTE: 480v units have 24v transformer & relay as standard (A1) - only TS option control section can be added  
Depth dimension on all 480v models is 10 7/8"

### FACTORY INSTALLED ADJUSTABLE LOUVER DIFFUSER OPTION



If required add L suffix to model number

LIST ADDER ...\$63

### WALL MOUNTED CONTROL PANEL

(Can not be used if In-Built controls are selected)

#### TO CONTROL MULTIPLE UNITS

Contains contactor(s) & 24v transformers

UPC 686334	MODEL	VOLTS	CONTACTORS	BOX SIZE	LIST
605700	AF3401-24	208	1 @ 35 AMPS	12" x 12" x 4 1/2"	328
605793	AH3401-24	240			
605854	AG3401-24	277			
605748	AF3402-24	208	2 @ 35 AMPS	15" x 15" x 4 1/2"	407
605786	AH3402-24	240			
605847	AG3402-24	277			
605731	AF3403-24	208	3 @ 35 AMPS	18" x 18" x 4 1/2"	556
605779	AH3403-24	240			
605830	AG3403-24	277			