

# the *Vintage*<sup>TM</sup> series

*Outdoor heating can be elegant*

## *Infrared Outdoor Patio Heater*



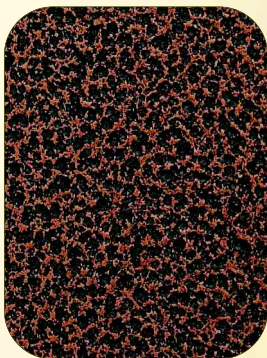
Tank in enclosure  
(tank not include)



Close up detail base



Heavy duty latch



Magnified



Hood Cover  
(Optional Accessories)

Please note: We have made every effort to make our heaters as safe, easy to assemble, and durable as possible. However, improper use, installation, adjustment, alteration, or maintenance of heater can cause property damage, injury, or possibly death. Please read instruction manual thoroughly before using, installing, or repairing this product. Please contact us if you have any questions whatsoever about the safe operation of this product. Due to our ongoing commitment to product improvement, prices, specifications, and materials subject to change without prior notice.

### Model **PC-02 CAB**

### *Specifications and Safety Features:*

*This product is for outdoor use only*

Overall Height:	92 inches (including installed reflector)
Weight:	95 lbs including reflector. Tank with fuel weighs additional 40 lbs.
Reflector:	One piece anodized aluminum- 34 inch diameter
Major Components:	Solid cast aluminum post, socket, and tank enclosure. Stainless steel burner head, solid feed line, and heavy duty round cast iron base for easily moving heater.
Ignition:	"Sure Start" push button Piezo ignition (no battery required)
Burner Material:	Commercial grade series 403 stainless steel
Emitter Grid:	Commercial grade series 403 stainless steel
External Fasteners:	Stainless steel
BTU Input/Hour:	40,000 BTU
Base Diameter:	19.5 inches (weight 40 lbs) base solid cast iron tank/fuel weighs additional 40 lbs. Tank is not included.
Circle of Heat:	Varies 10 to 15 ft (3.2 to 4.2 meters), based on wind conditions, wind chill factor, location, and wind protection. We do not recommend using heater in windy conditions, in rainy conditions, or snow.
Clearances:	Minimum clearance from combustibles is 24 inches from top of reflector 24 inches from sides of reflector.
Burn Time:	Approximately 10 hours on high setting
Gas Pressure:	11 inches water column for propane (LP reg required and included).
Gas Supply:	The PC-02 CAB is designed and UL approved for propane fuel only.
Safety System:	100% safety pilot and safety shut-off cylinder must be supplied that conforms to current standard and has OPD (overfill protection device) included (tank optional).
Certifications:	Underwriters labs (UL) US and Canada. In the US model PC-02 CAB heater complies with CSA 5.90 (3rd Edition). In Canada heater complies with CAN 1-2.23-M82 outdoor patio heater standard.
Warranty:	One year limited
Installation:	Installation must conform to your local codes and ordinances. If you have any questions as to your local regulations or possible restrictions to using propane fired outdoor heaters you should check with your local fire, code, or safety officials. We will not accept any heaters for return that cannot be used due to your local building or safety standards. It is the responsibility of the purchaser to check their local codes and fire restrictions or ordinances. Not for use inside any enclosed space, tents, recreational vehicles, prefab enclosure, boats, or other moving objects.

## **AEI Corporation**

*"Providing Only The Finest In Leisure Gas Products... Since 1966"*

2641 DuBridge Avenue, Irvine, CA 92606

Phone 949-474-3070 - FAX 949-474-0559

Email [aeicorp@sbcglobal.net](mailto:aeicorp@sbcglobal.net) - [www.patiocomfortheaters.com](http://www.patiocomfortheaters.com)

